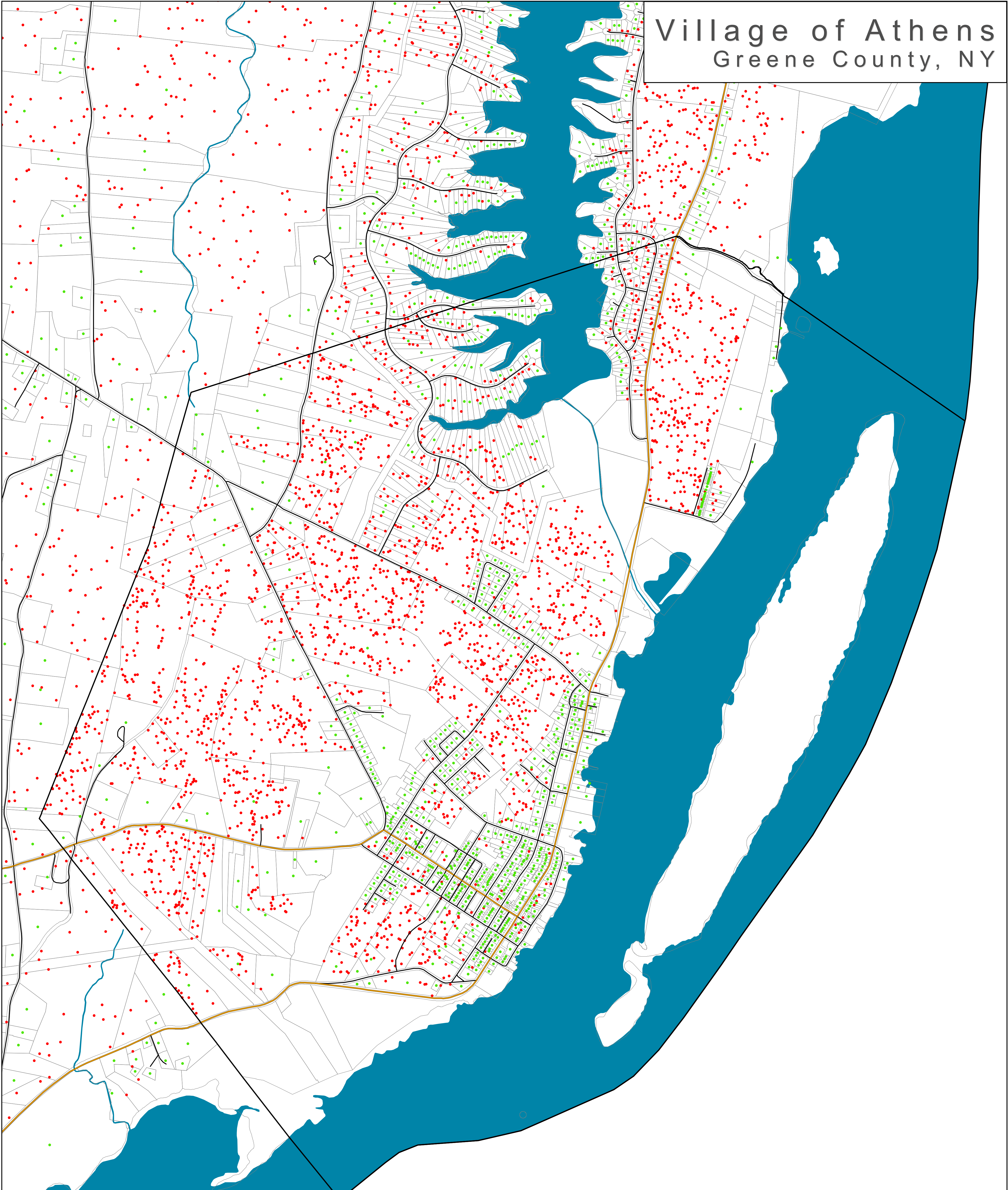


Village of Athens

Greene County, NY



- Buildout - New Residential Uses With Water and Sewer

- Town Boundary
- Village Boundary

Roads

- Primary Highway
- Secondary Road-State or County
- Local Road
- Railroads
- Parcels
- Water
- Streams

- Existing Residential Use
- Potential New Residences
- 1 Dot = 1 New Residence

Community Planning &
Environmental Associates

Nan Stolzenburg, AICP - www.planningbetterplaces.com
152 Stolzenburg Road, Berne, NY 12023
Don Meltz, Planning and GIS - www.donmeltz.com

