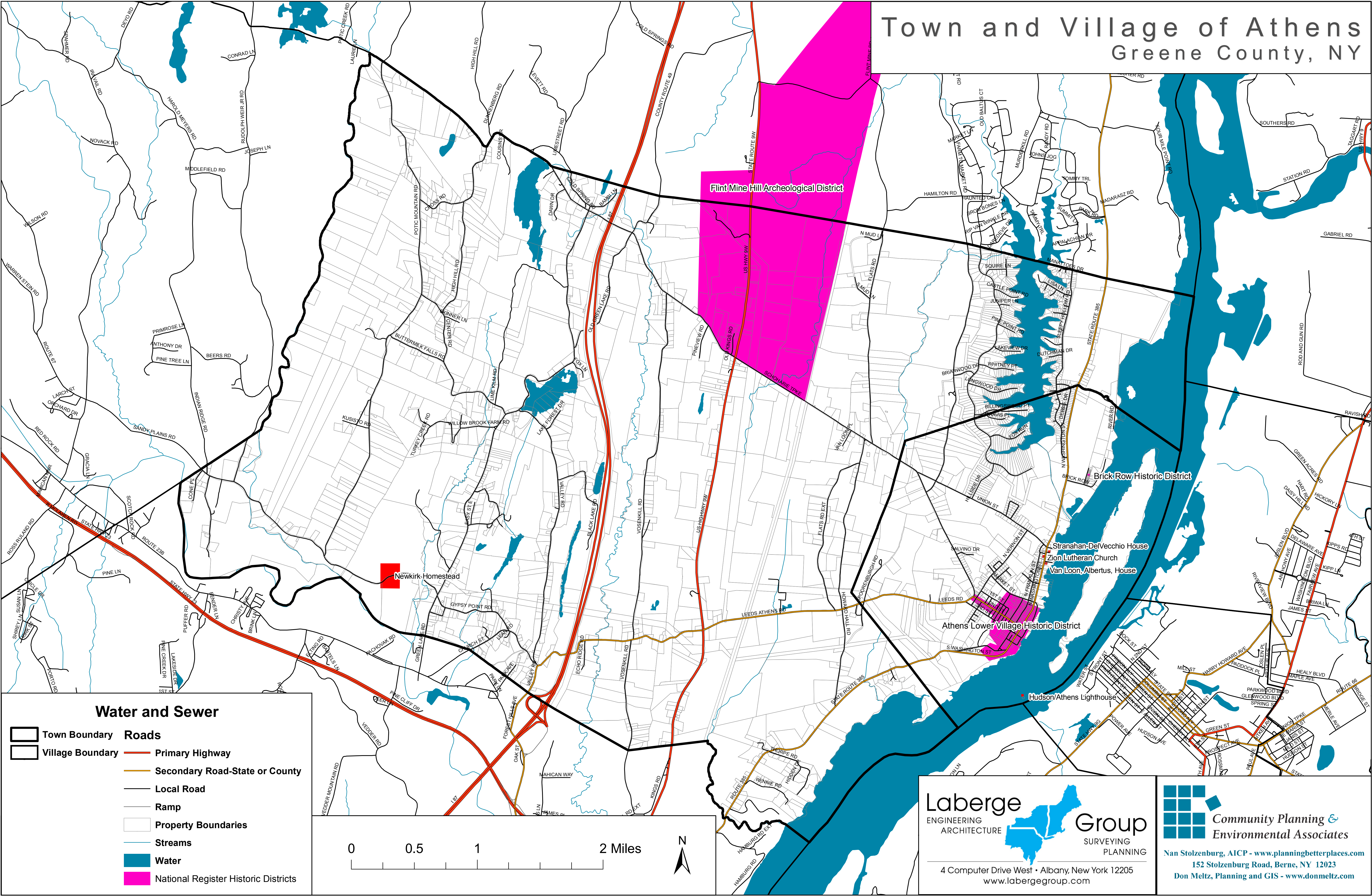


Town and Village of Athens Greene County, NY



Water and Sewer

	Town Boundary		Roads
	Village Boundary		Primary Highway
	Property Boundaries		Secondary Road-State or County
	Streams		Local Road
	Water		Ramp
	National Register Historic Districts		



Laberge Group
ENGINEERING ARCHITECTURE
SURVEYING PLANNING

4 Computer Drive West • Albany, New York 12205
www.labergegroup.com

Community Planning & Environmental Associates

Nan Stolzenburg, AICP - www.planningbetterplaces.com
152 Stolzenburg Road, Berne, NY 12023
Don Meltz, Planning and GIS - www.donmeltz.com